

Earth Day 2014

Elizabeth Leavitt
Director, Aviation Planning and Environment

Stephanie Jones Stebbins
Director, Seaport Environment and Planning

April 22, 2014

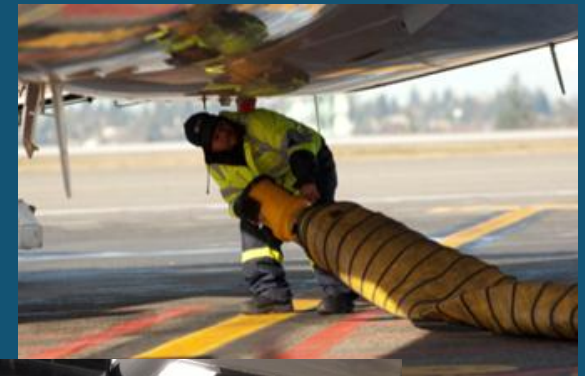
Electric Ground Support Equipment (EGSE)

- Completed Phase I: 296 charging stations installed
- Phase II to be completed in 2014 for a total of 600 stations



Pre-Conditioned Air

- Installed at 68 of 73 gate locations
- Allows pilots to turn off their engines
- Saves airlines approximately \$13 million in fuel
- Expected to reduce approximately 40,000 tons of greenhouse gases per year



More Renewable Fuels



Greener Skies Initiative



More Food Bank Donations

- More concessions participating in our program this year, led to donating surplus food to local food bank
- Donated over 122,000 lbs. since 2006
- In 2013, increased our donations by approximately 40% to a total of 550 meals per week.



Sustainable In-Sights



Sustainable Airport Master Plan

- Align traditional master planning with new sustainability challenges
 - Environmental goals as key requirements
 - Evaluate alternatives to ensure we meet our goals
- Achieve greater environmental and economic performance

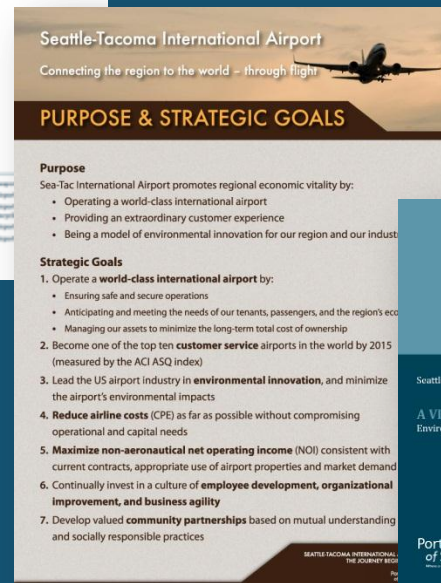
Sustainable

Airport Master Plan

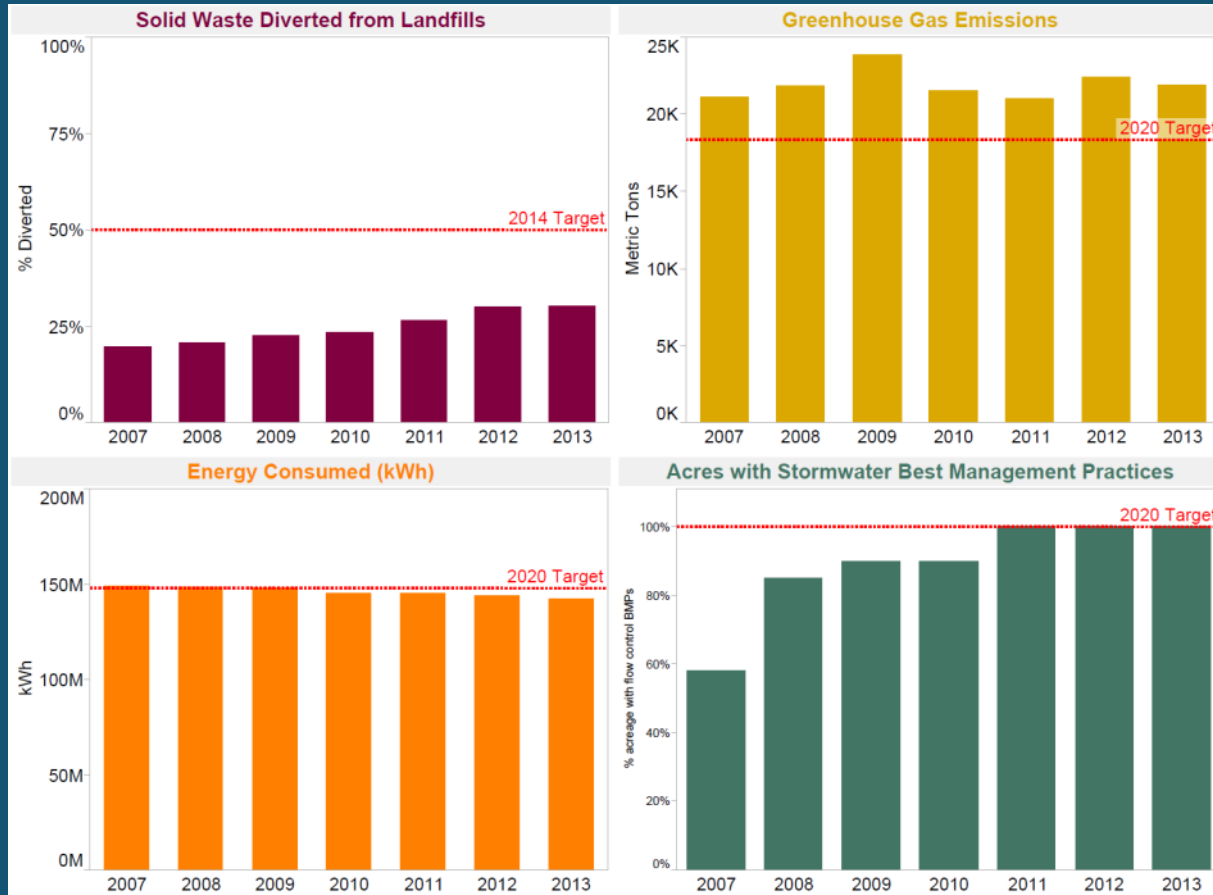
Seattle-Tacoma International Airport



Strategic Alignment



Aviation Key Metrics



What's Happening in 2014?

- Finish EGSE and PC Air
- More electric charging stations in the parking garage
- More options for renewable natural gas and biomethane
- Sustainable Airport Master Plan
- Compostable Service Ware and LEED Buildings



Northwest Ports Clean Air Strategy



- Update adopted by Commission in December 2013
- Goals to further reduce emissions of diesel particulate matter and greenhouse gases in years 2015 and 2020

Grants Received - Clean Truck Program

- Congestion Mitigation for Air Quality (CMAQ) grant: \$3.5 million in funding from USDOT
- Clean Diesel grant: \$0.5 million from WA Dept of Ecology
- Diesel Emission Reduction Act (DERA) grant: \$1.2 million in funding from USEPA



Awards

- 2013 Breathe Easy Champion Award
American Lung Association



- 2014 USEPA Clean Air Excellence Award

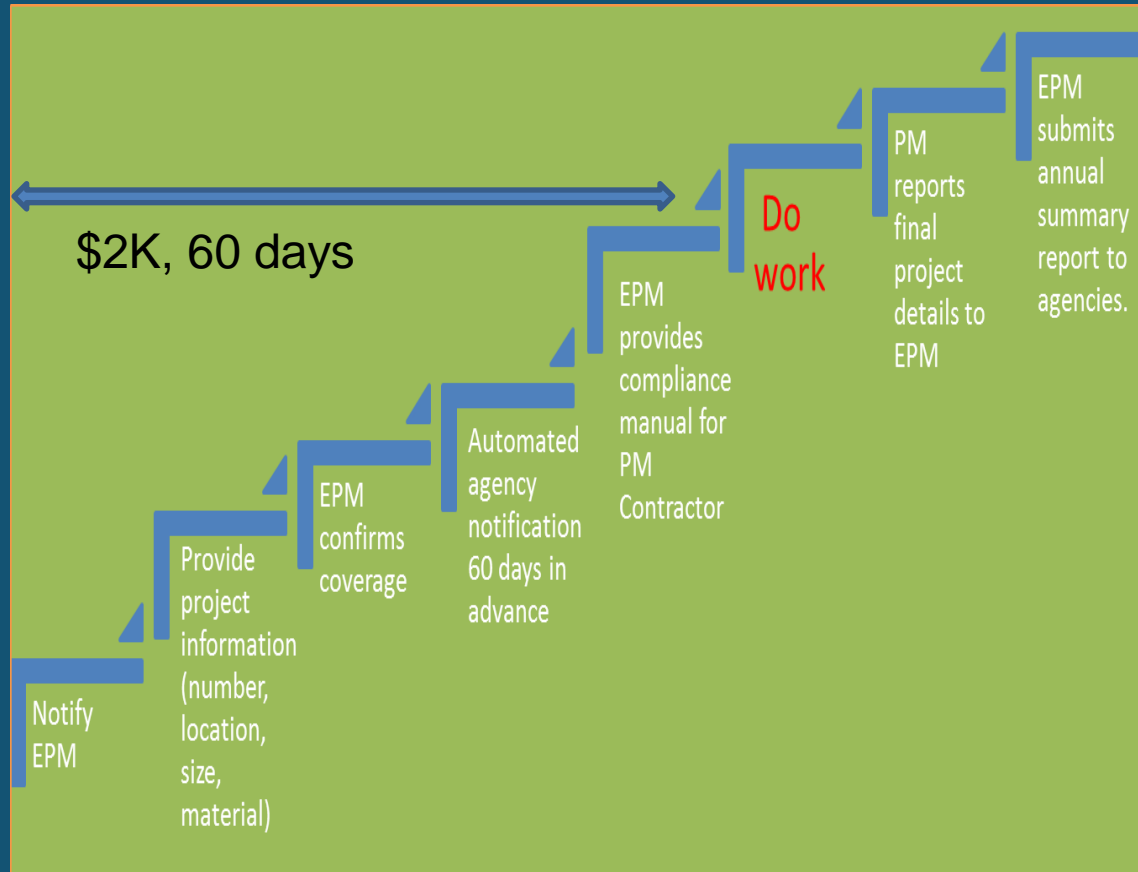
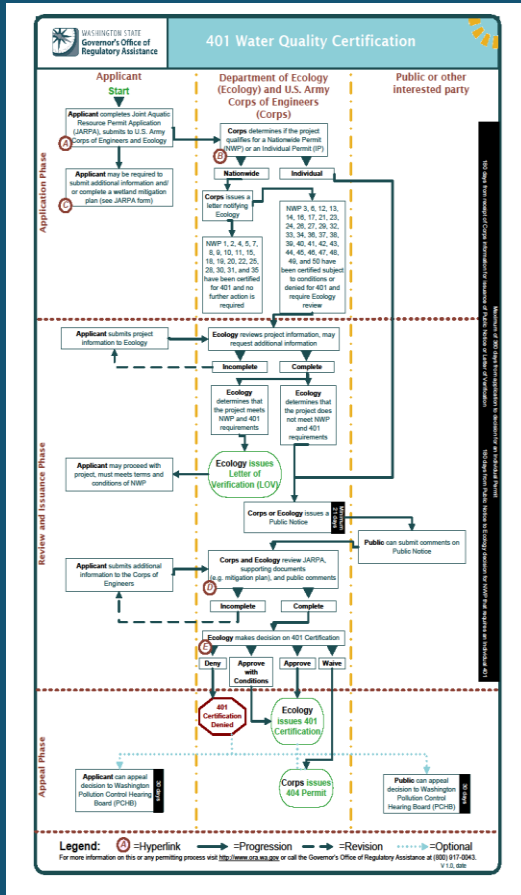


Permitting: Pile Systems Repair & Maintenance

- Applications submitted in April 2012
- Reflects substantial technical analysis and environmental impact assessment
 - Port-wide pile inventory
 - Underwater noise analysis
 - GIS mapping
 - Biological evaluation
 - BMPs and conservation measures
 - Monitoring plans

From this:
±60K, 6 months

To this:
\$2K, 60 days



Programmatic vs. Standard Permit Cost Comparison

Pre-Programmatic Projects	Permitting costs	2013 Programmatic projects	Permitting costs
P91 fender system upgrade	\$76,228	FT 2013 piling maintenance	\$2000
T18 Fender Replacement	\$68,506	Terminal 5 fender pile replacement	\$2000
T18 South End Fendering	\$33,840	Terminal 86 Steel pile Corrosion Repair	\$2000
		Terminal 102 Float Pile Replacement	\$2000
		Pier 90 Berth 8 Fender pile replacement	\$2000
	\$178,574		\$10,000

T-91 Remediation



- Completed self performed cleanup of one hotspot area
- Completed design of former tank farm area and awarded construction contract

East Waterway Superfund Site



- Final Supplemental Remedial Investigation Report submitted to EPA
- Draft Feasibility Study submitted to EPA

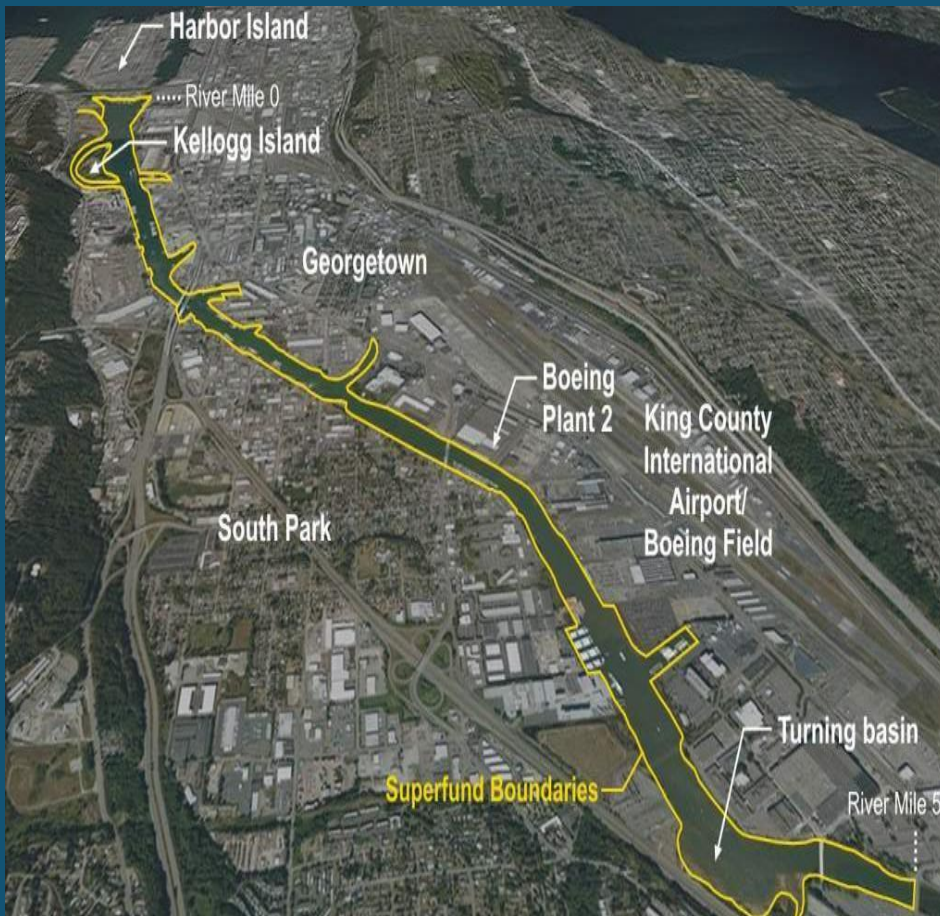
Terminal 117 Early Action Area



T-117 uplands/sediments cleanup, looking NE to Boeing Plant 2

- Cleanup of uplands began in May
- In water cleanup began in December
- Supported Super JTI with hiring a graduate

Lower Duwamish Waterway Superfund Site



- EPA's proposed plan out for comment in 2013
- Comments on plan to make it more implementable
- Began study on fishers' use of the river

Strategic Alignment



Century Agenda

Seaport Green Gateway Strategy

The Seaport's Environmental Strategy. This strategy seeks to enhance our competitive advantage among ports in demonstrating stewardship and reducing the environmental impact of our operations.

Commercial Support
Programs that help support our business advantage

GOAL
Collaborate with industry to reduce environmental impacts while enhancing our competitive advantage

GUIDING PRINCIPLES

- Develop environmental initiatives to enhance the Port's economic competitiveness.
- Maintain collaborative approach to environmental problem solving.

OBJECTIVES

- Implement programs that reduce resource use, emissions and the Port's carbon footprint, while increasing our competitive advantage.

ACTION PLAN

- 2012: Support Green Gateway marketing strategies and build upon the expanded "Carbon Footprint Analysis of the Asia to North America Intermodal Trade", SAF
- 2012: Collaborate with key customers to develop and pilot a "Shopper via Green Gateway" product label. SAF, SB
- 2013 - 2017: Join National/International environmental performance certification programs
- 2012: Research carbon offset pilot for cruise passengers. SAF
- 2013: Implement 2015 Clean Air Strategy goals. IAF
- 2012: Update the Northwest Ports Clean Air Strategy, based on the outcomes of the Emissions Inventory. SAF
- 2013: Research expanding Green Gateway Partner Assets to MTOs, trucking and rail companies. IAF
- 2013: Reinforce internal communication on environmental Green Gateway strategies, including Internal Brown Bag (IAB 2012).
- 2012: Collaborate with stakeholders at T91 to reduce and minimize and manage waste streams at facility. MD
- 2012: Develop and begin implementation of comprehensive energy plan that focus on reducing Seaport Energy use and reducing operating costs for the Seaport and tenants. PEM



What is the Northwest Ports Clean Air Strategy?

- The Northwest Ports Clean Air Strategy (strat) Tacoma and Port Metro Vancouver (Canada) Georgia Basin – Puget Sound airshed.
- The strategy was first developed in 2007 and for 2015 and 2020.
- Other partners in the strategy include: Environ U.S., Environmental Protection Agency, Washington Department of Ecology, Metro Vancouver, and Sound Clean Air Agency.
- The original strategy was developed using the Puget Sound Maritime Air Emissions Inventory inventories conducted in British Columbia in 2007. The inventories catalogued air emissions from a wide range of maritime and maritime-related sources in the Puget Sound airshed.
- Follow up air emissions inventories were conducted (Port Metro Vancouver) and 2011 (Port of Seattle/Tacoma). The inventories showed significant air emissions and identified areas where emissions could be reduced even further.
- Regulations, technology and best practices have since the original strategy was developed. This reflects many of those changes.



Where a sustainable world is headed.™

SEAPORT ENVIRONMENTAL SERVICES & PLANNING (2014)

MISSION:
The Green Gateway Strategy is the Seaport's environmental strategy. This strategy seeks to enhance our competitive advantage and be the global leader among ports in demonstrating stewardship and reducing the environmental impact of our operations.

DESCRIPTION:
Seaport Environmental and Planning is comprised of teams of professionals working in Remediation, Air Quality, Permitting and Compliance and Facility and Land Use planning. We support both the Seaport and Real Estate Divisions and seek to demonstrate environmental stewardship and value to the business that we support and to the surrounding community.

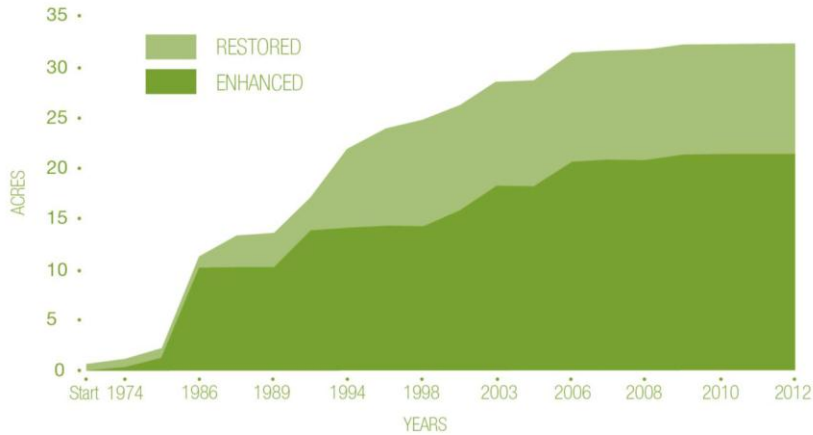
STRATEGY:
Compliance Management meet local, state and federal regulations as effectively and efficiently as possible. Commercial Support collaborate with industry to reduce environmental impacts while enhancing our competitive advantage. Community Commitment Engage stakeholders to build understanding and support for environmental initiatives.

2014 GREEN GATEWAY STRATEGY BUSINESS PLAN

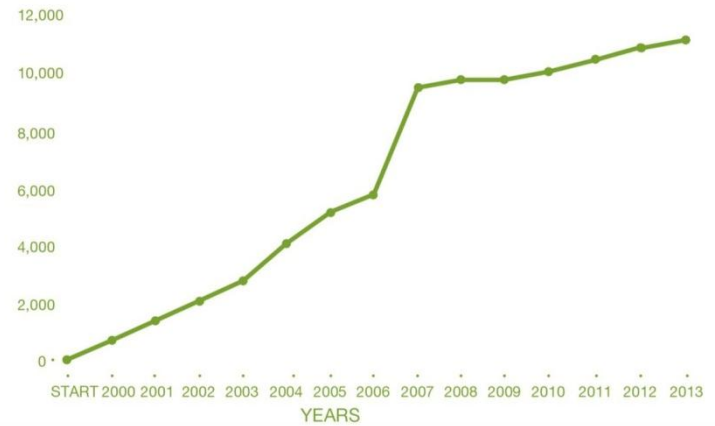
Key Goals	Major Tasks	Measure	Targets
Efficiently obtain Environmental Permits	a) Acquire permits on regional and comply with regulations/standard conditions b) 1) Obtain Programmatic East waterway dredging permit b-2) Salween bank stabilization permit	a-1) Cost and time to approval a-2) Number of permit related non-compliance situations	a-1) 100% of permits required within agreed budget/acceptable schedule a-2) 0 non-compliance situations
Protect Puget Sound Water Quality and meet or exceed agency requirements for innovative long-term facilities owned or operated by the port	b-1) ERM Programmatic East waterway dredging permit b-2) Salween bank stabilization permit c) Monitor stormwater program to comply with Port Phase 1 municipal SWPPP permit. d) Finalize and implement Stormwater Action Plan	b-1) ERM Permit received b-2) Bank stabilization permit achieved c) 1) Monitor program with in budget c-2) Number of violations under the Phase 1 SWPPP permit on Port property d) 1) Identify and implement top priority established by ASUP plan	b-1) 1) 0 violations b-2) 0 violations c) 1) Monitor program with in budget c-2) 0 violations
	e) Reduce stormwater cost effective compliance strategy through ECAP program	e) Number of permits awarded	e) 0 permits issued by Q4
	f) Eliminate existing storm catchment and manage port property sites to reduce sediment contributions to Puget Sound	f) Identify all port facilities that a total impact catch basin study and clean CBI is needed	f) 100% catch basin study completed
Major Tasks	Measure	Targets	

Seaport Key Metrics

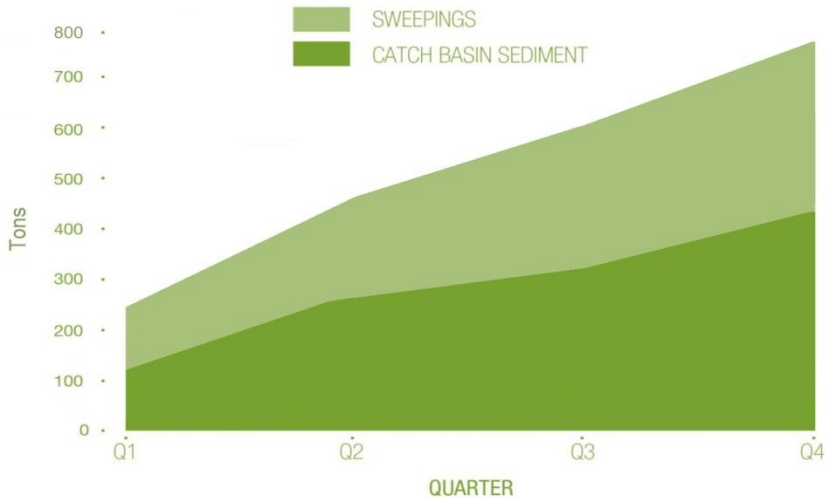
FISH HABITAT AREA SUMMARY



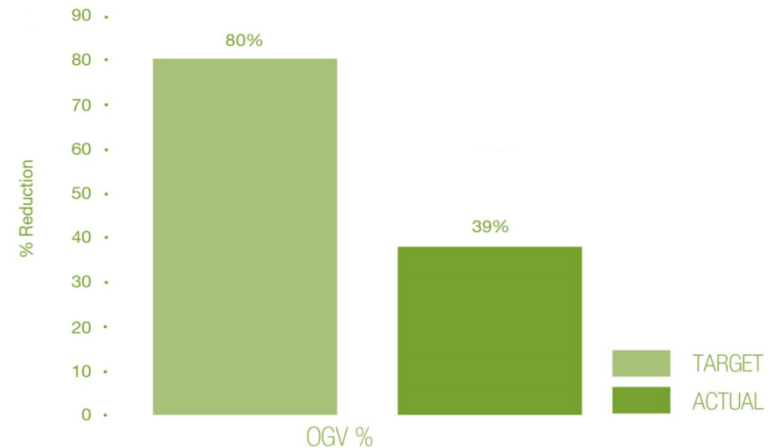
CREOSOTE-TREATED PILE REMOVAL (Cumulative number of piles removed)



2013 STORMWATER SEDIMENT SUMMARY



2013 Ocean Going Vessel % Meeting Emission Targets



What's happening in 2014

- ScRAPs 2 launches
- Last year of ABC Fuels
- Remediation proceeds at T-91 and T-117
- ROD expected for Lower Duwamish
- Stormwater AKART completed with WPPA
- Installing a splash box at T-91